

Fredericksburg

290

87

87

16

290

290

87

87

16

290

290

87

87

16

290

290

87

87

16

290

290

87

87

16

290

290

87

87

16

290

290

87

87

16

290

290

87

87

16

290

290

87

87

16

290

290

87

87

16

290

290

87

87

16

290

290

87

87

16

290

290

87

87

16

290

290

87

87

16

290

290

87

87

16

290

290

87

87

16

290

290

87

87

16

290

290

87

87

16

290

290

87

87

16

290

290

87

87

16

290

290

87

87

16

290

290

87

87

16

290

290

87

87

16

290

290

87

87

16

290

290

87

87

16

290

290

87

87

16

290

290

87

87

16

290

290

87

87

16

290

290

87

87

16

290

290

87

87

16

290

290

87

87

16

290

290

87

87

16

290

290

87

87

16

290

290

87

87

16

290

290

87

87

16

290

290

87

87

16

290

290

87

87

16

290

290

87

87

16

290

290

87

87

16

290

290

87

87

16

290

290

87

87

16

290

290

87

87

16

290

290

87

87

16

290

290

87

87

16

290

290

87

87

16

290

290

87

87

16

290

290

87

87

16

290

290

87

87

16

290

290

87

87

16

290

290

87

87

16

290

290

87

87

16

290

290

87

87

16

290

290

87

87

16

290

290

87

87

16

290

290

87

87

16

290

290

87

87

16

290

290

87

87

16

290

290

87

87

16

290

290

87

87

16

290

290

87

87

16

290

290

87

87

16

290

290

87

87

16

290

290

87

87

16

290

290

87

87

16

290

290

87

87

16

290

290

87

87

16

290

290

87

87

View Selected on Map Search Results > 65460,65480,84066 for Year 2011

Property Details

Account
Property ID: N/A
Geo. ID:
Type:
Legal Description:

Location
Address:
Neighborhood:
Mapsco:
Jurisdictions:

Owner
Name:
Address:

Property
Appraised Value:

Map Layers

Radius Search

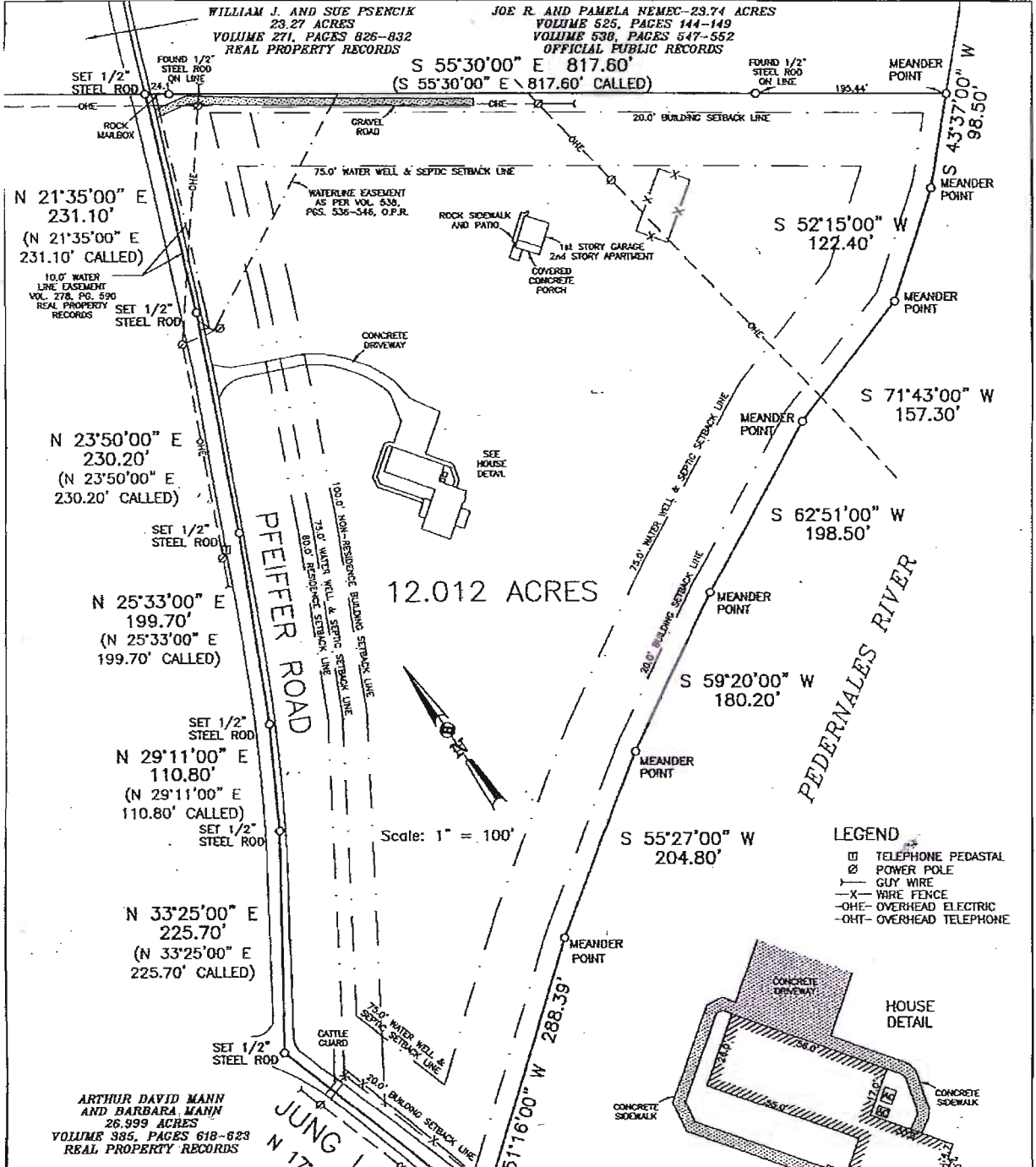
1:

The map displays a network of property boundaries. A central parcel, labeled 65460, is highlighted in orange. Surrounding it are several other parcels, each labeled with a unique number: 65433 to the northwest, 55857 to the west, 61811 to the southwest, 65461 to the north, 21054 to the northeast, 20352 to the east, 54710 to the northeast, 33989 to the east, 63526 and 63527 to the southeast, 21083 to the southeast, and 81962 to the far east. The map also shows various lines representing roads or boundaries, and several circular features that could be trees or ponds.

WILLIAM J. AND SUE PSENCIK
23.27 ACRES
VOLUME 271, PAGES 826-832
REAL PROPERTY RECORDS

JOE R. AND PAMELA NEMEC-23.74 ACRES
VOLUME 525, PAGES 144-149
VOLUME 538, PAGES 547-552
OFFICIAL PUBLIC RECORDS

S 55°30'00" E 817.60'
(S 55°30'00" E 817.60' CALLED)

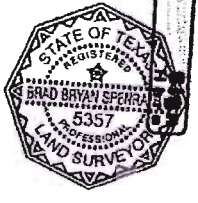


12.012 ACRES

Scale: 1" = 100'

- LEGEND**
- TELEPHONE PEDASTAL
 - ⊙ POWER POLE
 - GUY WIRE
 - X- WIRE FENCE
 - OHE- OVERHEAD ELECTRIC
 - OHT- OVERHEAD TELEPHONE

James T. Schulz
Constance A. Schulz



BORROWERS:
JAMES SCHULZ AND CONSTANCE SCHULZ

I HEREBY CERTIFY THAT THIS SURVEY WAS MADE ON THE GROUND, THAT THIS PLAT CORRECTLY REPRESENTS THE FACTS FOUND AT THE TIME OF THIS SURVEY AND THAT THERE ARE NO VISIBLE EASEMENTS OR ENCROACHMENTS OF IMPROVEMENTS EXCEPT AS SHOWN HEREOF.

Brad Bryan Spenrath
BRAD BRYAN SPENRATH
REGISTERED PROFESSIONAL LAND SURVEYOR
5357
TEXAS REGISTRATION NO.

ADDRESS:
182 PFEIFFER ROAD

- REFERENCES:**
- VOLUME 272 PAGE 81-86 R.P.R.
 - VOLUME 58 PAGE 489-503 D.R.
 - VOLUME 119 PAGE 118-119 D.R.
 - VOLUME 204 PAGE 654-655 R.P.R.
 - VOLUME 284 PAGE 380-381 R.P.R.
 - VOLUME 278 PAGE 590-592 R.P.R.
 - VOLUME 525 PAGE 127-133 D.P.R.
 - VOLUME 538 PAGE 536-546 O.P.R.
 - VOLUME 272 PAGE 94-97 R.P.R.
 - VOLUME 278 PAGE 566-569 R.P.R.

NOTE:

- 1) BASIS OF BEARING WAS ESTABLISHED FROM THE NORTHEAST LINE OF THE BELOW REFERENCED TRACT.
- 2) A RELEVANT DESCRIPTION OF THE ABOVE SHOWN TRACT WAS PREPARED.

PLAT SHOWING: A 12.012 ACRE TRACT OF LAND OUT OF THE LOUISA RAMOS SURVEY NO. 21, ABSTRACT NO. 573, GILLESPIE COUNTY, TEXAS, SAID 12.012 ACRE TRACT OF LAND ALSO BEING THAT CERTAIN 12.0 ACRE TRACT OF LAND CONVEYED TO THOMAS M. GAULAGER AND JACQUELINE M. GAULAGER BY DEED RECORDED IN VOLUME 424, PAGES 706-709, OFFICIAL PUBLIC RECORDS, GILLESPIE COUNTY, TEXAS.

HILL COUNTRY LAND SURVEYING, LLC
110 NORTH MILAM STREET
FREDERICKSBURG, TEXAS 78624
PHONE: (830) 990-2665